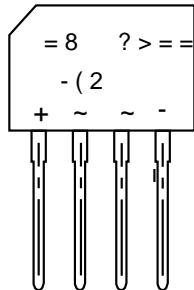




: 5 * % /

8OWUDVRIW 5HFRYHU\ %ULGJH



3, 11, 1*

3, 1	'(6&5,37,21
	, Q S X V A A Q
	, Q S X V A A Q
	2 X W S X W A Q R G H
	2 X W S X W A W K R G H

) HDWXUHV
 ‡ * O D V V V L Y D W L S G F W L R Q
 ‡ 5 H Y H U R W D J H 9
 ‡) R U Z D U G U H Q W
 ‡ + L J K X U & X U U H Q W D E L O L W \\
 ‡ ' H V L J Q R G X U I D R X S S O L F D W L R Q
 % Q H M L W
 ‡ & D V H % /
 ‡ 7 H U P L G R O G H U B B O H 6 7'

0D[LPXP 5HSHWLWLYH 3HDN 5956 DU VH 9ROWDJH

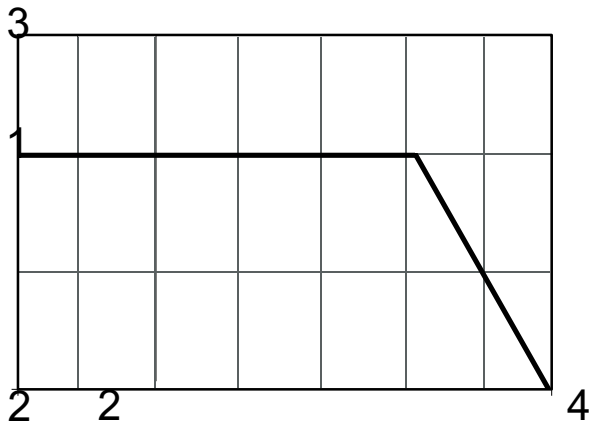
5DWLQWV & DP E L M Q W S H U D Q V R U M K H U Z S H F L I L H G
 6LQJ O H S K D V H K Q U I H Z D V M U Q G X F O R D G H S D F L W E X H U C R O W H

3DUDPHWHU	6\PEROV	: 5 * % /	8QLWV
0D[LPXP 5HSHWLWLYH 3HDN 5956 DU VH 9ROWDJH	9506		9
0D[LPXP 506 YROWDJH	9506		9
0D[LPXP '& %ORFNLQJ 9ROWDJH &			9
\$YHUDJH 5HFWLILHG 2XWSXW & X U U H Q W			\$
5HYHUVH 5HFRYHU\ 7LPH ,) \$,5 \$,55 \$	7UU		XV
3HDN)RUZDUG 6XUJH &XUUH QW +DOI 6LQH :DYH 6XSHULPSRV, H G R Q 5DWHG /RDG -('(& 0HWKRG		PV 6LQJ O H	\$
, WUDW R O V L Q B V W P V	, W		\$ 6
0D[LPXP)RUZDUG WDW H \$	9)		9
0D[LPXP '& 5HYHUVH &XUUH QW #7\$ DW 5DWHG '& %ORFNLQJ 9ROWDJH #7\$		f & f &	\$
7\SLFDO -XQFWLR Q & R D S D F L W D Q & M H			S)
2SHUDWLQJ DQG 6WRUDJH 7H P S T W D W X U H 5DQJ H a			f &
1 R W H 0 H D V X D M G +] D Q G S O L I H Y G H Y R G H V R D J H &			

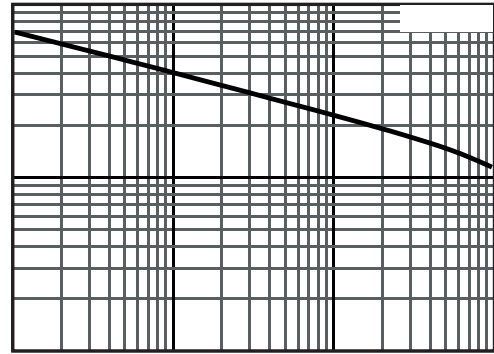


: 5 * % /

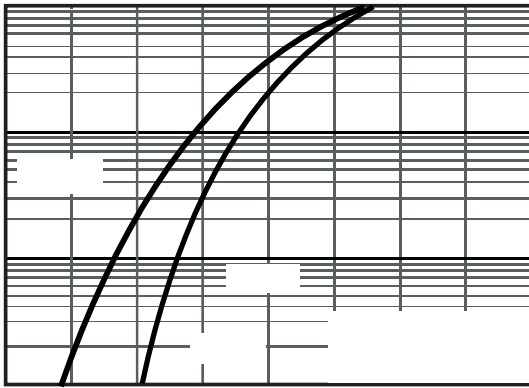
5 \$ 7 , 1 * 6 \$ 1 ' & + \$ 5 \$ & 7 (5 , 6 7 , & 6 & 8 5 9 (6 X Q O H V V R W K H U Z L V H Q R W H G



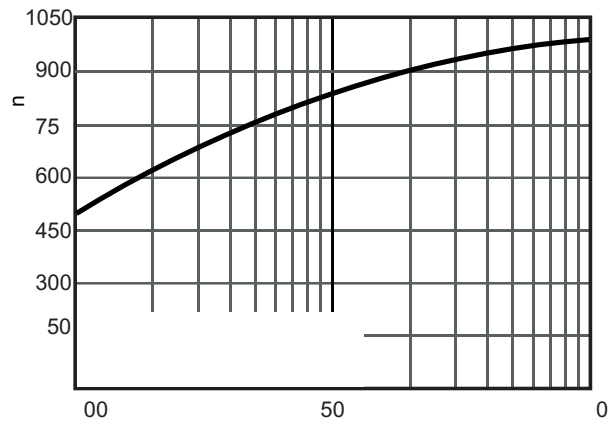
Current Derating, Case



Typical Junction Capacitance



Typical Forward Voltage



Typical Reverse Current

